

A genuinely seamless rendered finish for lightweight, energy efficient walls

1 RRR60 EPS (Expanded Polystyrene) boards are light, clean and easy to handle.

2 The boards are quickly installed and secured using specially designed screws and washers.

3 The ROCKCOTE QRender PM100 can be applied by machine or conventional hand trowel. Plastering machines can greatly improve the speed and efficiency of the rendering process.

4 The freshly applied render is screeded with an aluminium screed or "darby" achieving a straight wall ready for the installation of the reinforcing mesh.

5 The ROCKCOTE reinforcing mesh is pressed into the surface of the wet render and trowelled in using a stainless steel trowel. It is important that the mesh is installed just beneath the surface of the render. Under no circumstances should the mesh be installed to the board and then rendered over.

6 ROCKCOTE coloured texture coating or ROCKCOTE Polymer Render is applied by stainless steel trowel. The acrylic based texture coating or Polymer Render must have a dry film thickness of at least 1mm.

7 ROCKCOTE Armour in the selected colour is applied by brush and roller or suitable spray equipment. The Armour provides added resistance to the ingress of water as well as increased resistance to dirt and mould.



The ROCKCOTE Warranty

The ROCKCOTE Reinforced Render system carries a complete system warranty* provided that it is installed:

- as a complete system,
- strictly in accordance with the RRR System Specifications,
- by experienced installers who have the relevant skills and trade qualifications, and after proper detailing and integration with the other components of construction by a qualified design and construction professional;
- and a fully completed Warranty Application is submitted to and accepted by ROCKCOTE.

All specified components, including the RRR EPS base board, ROCKCOTE QRender PM100, ROCKCOTE reinforcing mesh, ROCKCOTE texture coatings, paint and all ancillaries form part of and are critical to the performance of the system. Any substitution of non-compliant parts or materials could compromise the performance of the system and would nullify the warranty.

All components for the RRR System, except base board, can be obtained from ROCKCOTE. RRR EPS base board can be obtained from ROCKCOTE's nominated suppliers.

* For full particulars of: the RRR System, the RRR System Warranty, Warranty Application and Warranty Certificate, the RRR System Installation Manual and Specifications, ROCKCOTE's nominated suppliers of RRR EPS base board, ROCKCOTE's other products,

Contact ROCKCOTE at WWW.ROCKCOTE.COM.AU.

Colour Selection Recommendation

The selection of dark colours on external walls exposed to direct sunlight can lead to excessive heat build up in the wall and could possibly cause a breakdown of the coating system. It is therefore recommended in the interests of energy efficiency and the integrity of the system that lighter colours are selected in these areas.



Australia's

Foremost

Manufacturer

of Architectural

Coatings



ROCKCOTE Enterprises Pty Ltd
ABN 42 066 227 174

Head Office
18 Machinery Road
Yandina Queensland 4561
Australia

PO Box 230 Yandina 4561

Telephone: 07 5446 7737
International: +61 7 5446 7737
Telefax: 07 5446 8303
Toll Free: 1300 736 668
Email: sales@rockcote.com.au
Website: www.rockcote.com.au

Sunshine Coast
Telephone: 07 5479 3900
Telefax: 07 5479 4500

Gold Coast
Telephone: 07 5554 2100
Telefax: 07 5596 1414

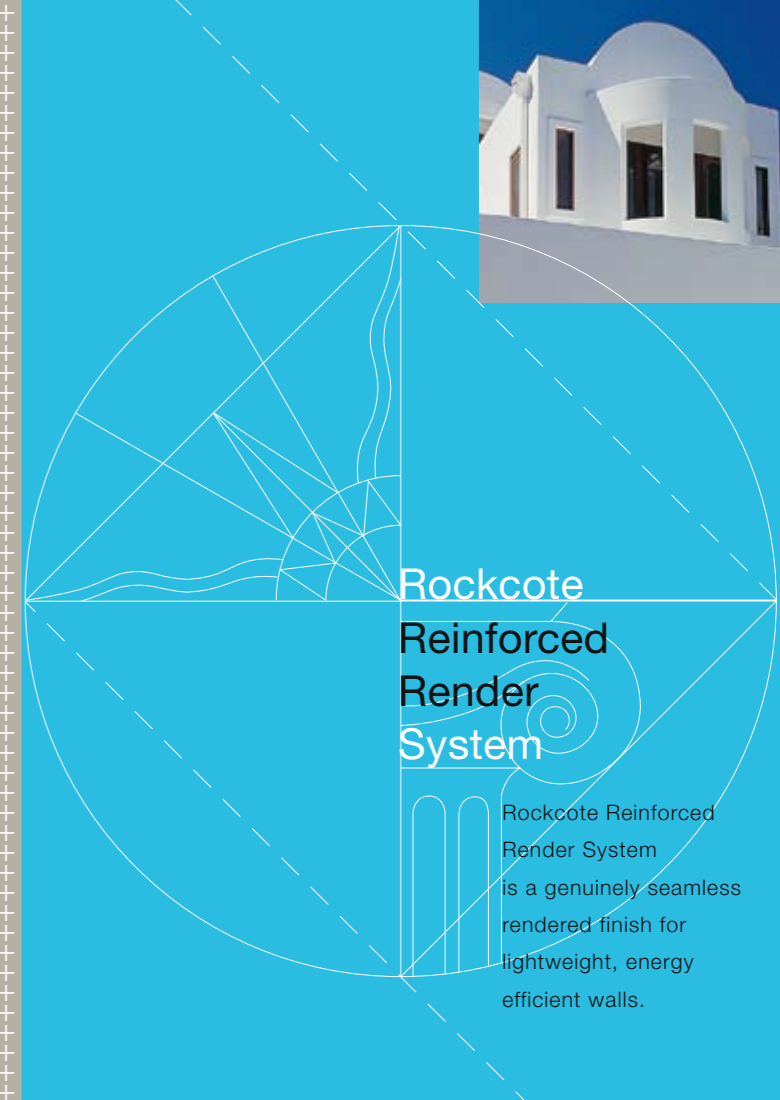
Brisbane
Telephone: 07 3348 8994
Telefax: 07 3348 8852

Newcastle
Telephone: 02 4978 6333
Telefax: 02 4969 6975

Melbourne
Telephone: 03 9763 7522
Telefax: 03 9763 2532

Tasmania
Telephone: 0418 146 647
Telefax: 03 6273 9299

Western Australia
Telephone: 08 9248 4496
Telefax: 08 9248 4497



RRR system

Render Solutions

ROCKCOTE Reinforced Render System



One System, a Host of Benefits!

ROCKCOTE Reinforced Render (RRR) System is a screeded reinforced render with a flexible acrylic finish suitable for installation over EPS (expanded polystyrene) insulation or selected cement sheet base board. These systems can be fitted over standard timber and steel stud walls, providing a genuinely seamless rendered finish in any choice of colour.

The EPS panels are also suitable for use over concrete or masonry walls where they provide an insulating barrier, allowing the thermal mass of the masonry to help moderate indoor temperatures.

The RRR System delivers the look and feel of masonry, a Level 5 finish and a complete system warranty*.

The RRR System offers the following advantages:

- Lower embodied energy plus excellent insulation qualities¹
- Cost effective
- Long life, low maintenance finish
- Long term durability
- Design freedom and flexibility
- Wide range of available texture finishes and colours
- Outstanding weather protection; water repellent & vapour permeable.

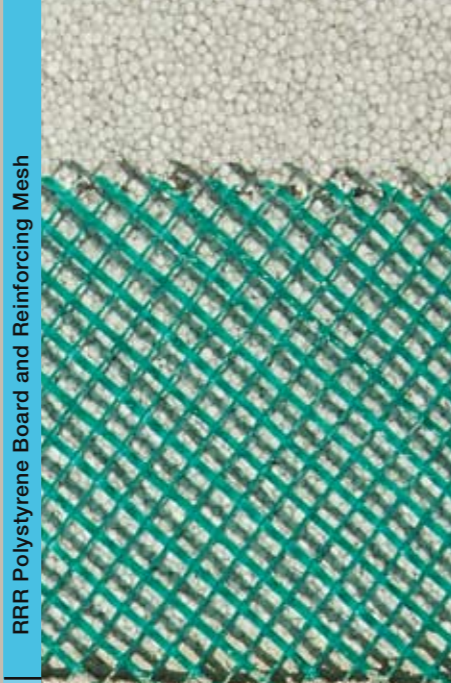
¹ The use of RRR polystyrene board ensures continuous thermal insulation without thermal bridging.

ROCKCOTE Design Centre, Nerang (below)

The protruding office area features 60mm polystyrene on timber studs. Main wall areas are tilt up reinforced concrete with 40mm polystyrene exterior facing bonded to the wall when poured. The excellent insulation of the RRR System and high thermal mass of the masonry allows this building to remain comfortable year-round without artificial heating or air conditioning.



RRR Polystyrene Board and Reinforcing Mesh



ROCKCOTE QRender PM100



ROCKCOTE Texture Coating



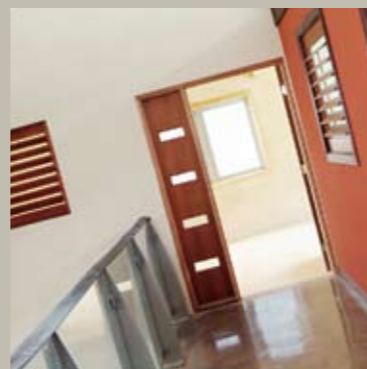
ROCKCOTE coloured acrylic top coat



The RRR System makes you look good... and makes your buildings look even better

The RRR System has more than 20 years of experience behind it. Developed by **ROCKCOTE**, Australia's leading manufacturer of renders and texture coatings, the performance of the RRR System has been proven in conditions as varied as the heat and humidity of the Australian tropics, to the extreme cold of alpine regions in New Zealand. In all such conditions the RRR System delivers a superb coloured render finish, indistinguishable from masonry.

Through ongoing R&D and direct experience of thousands of successful installations in the Australia-Pacific region, ROCKCOTE has become the premier supplier of quality Reinforced Render



The importance of the 3 Rs

The RRR System is complete in which each component has been specifically designed or selected to meet strict criteria. Only products and techniques meeting ROCKCOTE's Specifications* can be used in this system.

- **RRR Polystyrene Board:** building M grade polystyrene containing both flame retardant and insect repellent additives conforming to AS 1366: 1992 Part 3. The standard thicknesses are RRR – 40, 60 and 75mm, supplied in standard sheet sizes of 1.2 x 2.5 m. (Also available in thicknesses from 25mm to 110mm thick.)
- **Fixings, angle beads and starter strips:** specifically designed to perform in this system.
- **ROCKCOTE QRender PM100:** a polymer modified cement render with excellent adhesion to the base board.
- **Reinforcing mesh:** alkali resistant fibreglass mesh, 6mm weave, 160gpm. This is a critical component and cannot be substituted without affecting the performance of the system. Only the correct grade of ROCKCOTE fibreglass mesh is approved for use under the warranty.
- **Texture coating and Acrylic finish:** the RRR System is designed to be finished with at least 1mm of ROCKCOTE acrylic based texture and coloured high film build acrylic top coat. These coatings are available in a wide range of colours and textures.
- **Specialised tools and plastering machines:** ROCKCOTE has continually improved application efficiencies and finish standards through its introduction of specialist tools and plastering machines.

ROCKCOTES Levels of Finish for Lightweight Walling

The RRR System is a screeded reinforced render incorporating a flexible coloured finish. The system is applied to a thickness of 4-8mm allowing an appropriately skilled and qualified applicator to screed out all usual imperfections and irregularities in the substrate and provide a seamfree Level 5 finish. (see ROCKCOTE Levels of Finish Chart below).

This system has been developed to overcome what has been for some time a major source of complaint and dissatisfaction within the Australian building industry – the performance and appearance of textured cement sheet installations.

Our experience confirms that a competent applicator using the current joint patching & texture coating procedures can only count on achieving a Level 4 finish. This means that panel joints may be visible under side light conditions. This has been found to be the case in most situations. Accordingly those ordinary systems should only be used in non-critical areas such as gable ends etc, where this level of finish and performance is acceptable. Ordinary systems are not suitable for broad wall applications on quality buildings.

LEVELS OF FINISH FOR LIGHT WEIGHT CLADDINGS TO EXTERNAL WALLS.	SYSTEM	CHARACTERISTICS AND FINISH
LEVEL 1 – Cement Sheet Expressed Joints Standard Paint Finish		Visible PVC sheet joiners Painted flat finish Will follow the frame straightness
LEVEL 2 – Cement Sheet Joints taped & patched Roll-On Texture Coating		Joints may be visible under side-light conditions Not recommended for broad wall installation on quality projects
LEVEL 3 – Cement Sheet Joints taped & patched + 2mm Trowel-On Texture Coating or Polymer Render		Joints may be visible under side-light conditions (critical light) Not recommended for broad wall installation on quality projects
LEVEL 4 – Cement Sheet Joints taped & set Polymer Render over entire wall		Joints may be visible under side-light conditions (critical light) Not recommended for broad wall installation on quality projects
LEVEL 4 – Polystyrene RRR40 ROCKCOTE Reinforced Render System for lightweight Claddings.	40mm RRR40 EPS Finished with ROCKCOTE Reinforced Render System.	Continuous render finish, joints not visible under normal lighting conditions. May be some evidence of studs or panel joints under severe side light.
LEVEL 5 – Polystyrene RRR60 & 75 ROCKCOTE Reinforced Render System for lightweight Claddings.	RRR EPS 60mm – 100mm. Finished with ROCKCOTE Reinforced Render System	No visible joints under any light conditions Look and feel of rendered masonry.